

Planning Committee Meeting

9th July 2020

Planning Committee

- Cllr Clive Woodbridge
(Chairman)
- Cllr Monica Coleman
(Vice Chair)
- Cllr Alex Coley
- Cllr Nigel Collin
- Cllr Neil Dallen
- Cllr David Gulland
- Cllr Previn Jagutpal
- Cllr Colin Keane
- Cllr Jan Mason
- Cllr Steven McCormick
- Cllr Lucie McIntyre
- Cllr Debbie Monksfield
- Cllr Peter O'Donovan

Reason for format of meeting

- Coronavirus pandemic means the ability to hold Local Authority Committee Meetings at the Council's Town Hall has been severely restricted
- *The Local Authorities and Police and Crime Panels (Coronavirus) (Flexibility of Local Authority and Police and Crime Panel Meetings) (England and Wales) Regulations 2020*, now allows a Local Authority to hold a Committee Meeting or a meeting of Council, remotely and for Members to be able to vote remotely

Public and press access

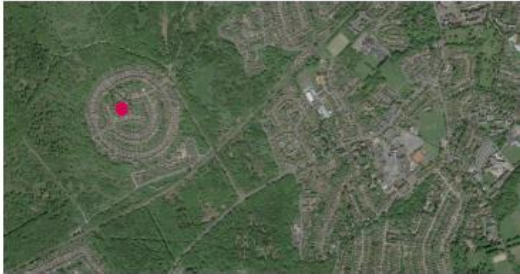
- The public and the press will be able hear the Committee on the live stream and see all the presentations being presented
- Any public speakers on agenda items dealing with applications have been asked to submit their submissions in writing. In the event of a technical issue disrupting public speaking during the meeting, these statements will be read out by Officers in accordance with permitted time limits

Item 2

19/00929/FUL Wells Social Centre, Spa Drive, Epsom, Surrey, KT18 7LR.

The redevelopment of the existing site to provide 23 residential units comprising a mix of 5 x 1 bed, 15 x 2 bed and 3 bed properties (40% affordable), a new community hall, playground and associated car parking and landscaping following demolition of the existing building

6



7



8



9



10



11



12



13





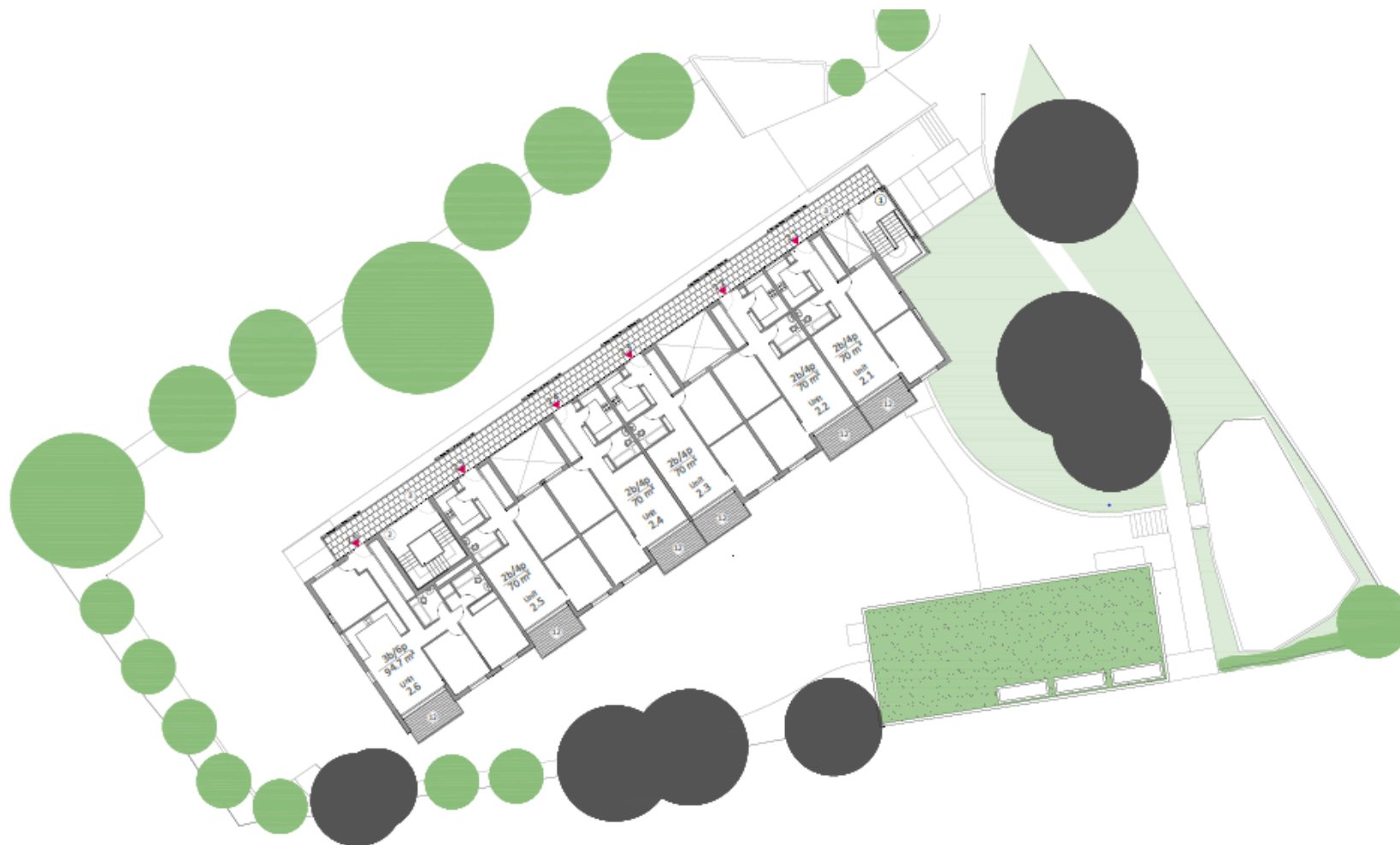








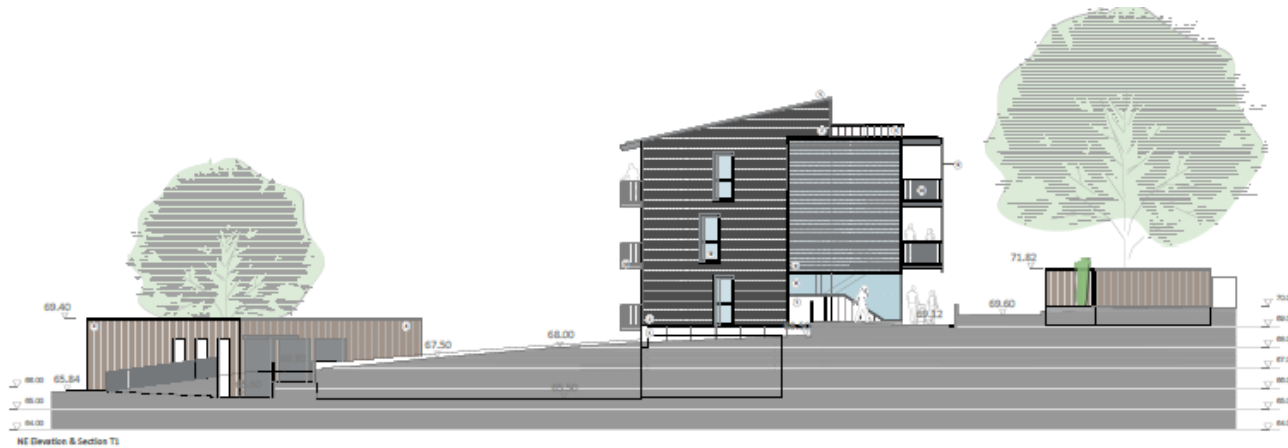




Submitted Elevations of Residential Block



Submitted Elevations of Residential Block



23

Illustrative 3-d Images

3D COMPUTER SKETCH IMAGES

EPSOM
EWELL
BOROUGH COUNCIL

JUICE
architects



SOUTH WEST VIEW



SECTION ACROSS SITE



VIEW FROM WICKER'S WAY NEAR SPA DRIVE



VIEW FROM WICKER'S WAY NEAR PLAY AREA



PODIUM FROM NORTH WEST

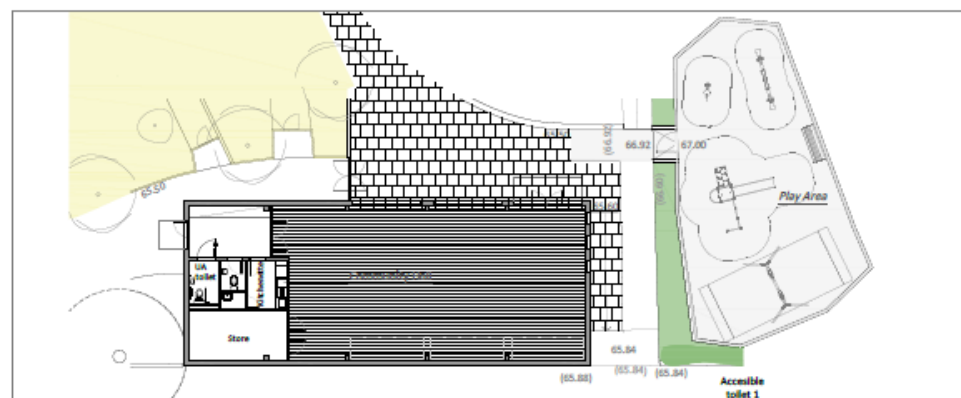
Illustrative Elevational Images



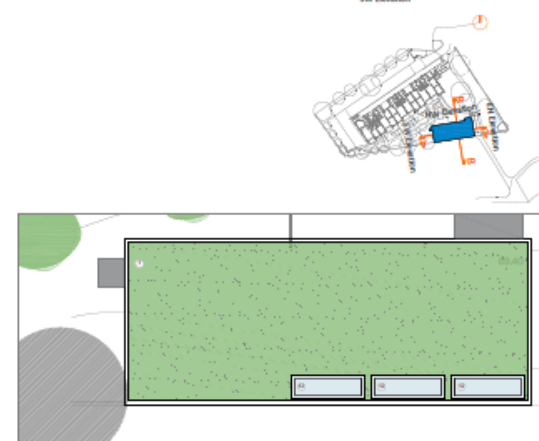




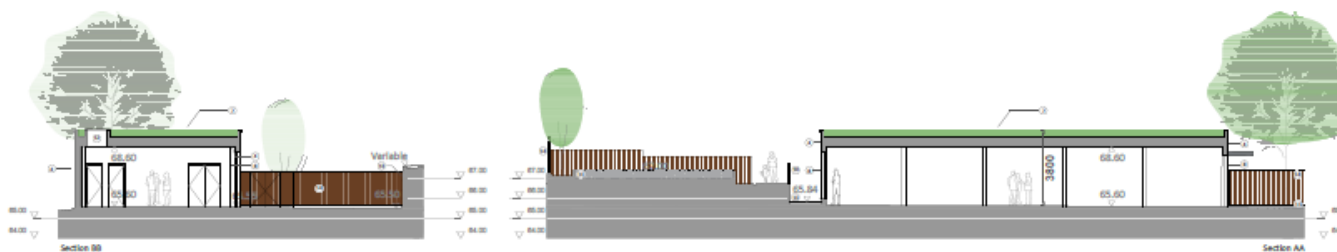
Submitted Images of the Community Hall



Ground Floor (+45.40)



Roof Plan (+49.40)



Section BB

Section AA